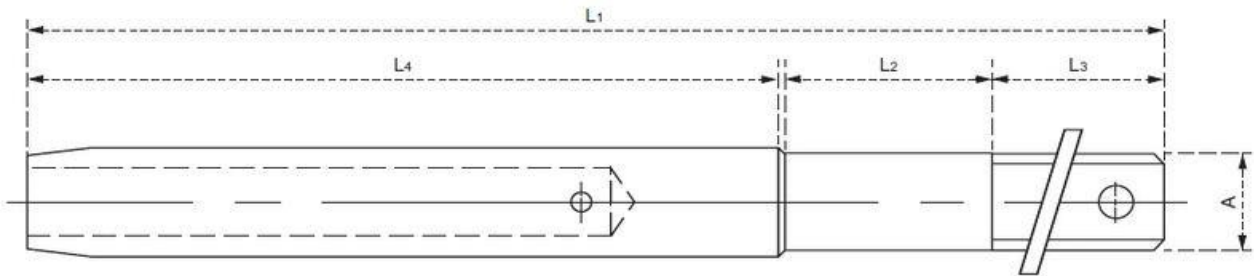


Pressed thread terminal



The connection is made acc. DIN EN 13411-8
 EC-type examination certificate **CA455** (available on request)

Part-no.	Rope-Ø	A-Ø	L1	L2	L3	L4	BØ
460610140	6	M10	208	30	110	66	12,5
4606510140	6,5	M10	213	30	110	71,5	12,5
460814225	8	M14	314	55	170	88	15
460914225	9	M14	325	55	170	99	15
461016225	10	M16	336	55	170	110	18
461120250	11	M20	371	80	170	121	20
461220250	12	M20	382	80	170	132	20
461320250	13	M20	394	80	170	143	22
461422300	14	M22	456	130	170	154	25
461522300	15	M22	467	130	170	165	25
461624300	16	M24	478	130	170	176	32